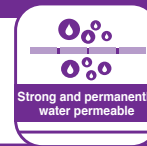


ROMPOX[®] - EASY



Easiest to use paving jointing mortar

1-component paving jointing mortar, ready to use



PROPERTIES

- for pedestrian loads
- for joint widths from 5 mm | 3/16"
- for joint depths from 30mm | 1 3/16"
- highly water permeable
- mixed ready to use, vacuum packed
- for DIY use
- can be applied during drizzle
- no longer necessary to cover surface during drizzle
- improved, water compatible formula
- practically no resin film

Colour: sand-neutral

Colour: sand-stone grey

Colour: sand-basalt

Colour: natur-neutral

ROMEX[®]
PFLASTERFUGENMÖRTEL

Films & Consumption calculator at www.romex-pfm.de

Application

Construction site requirements: The foundation needs to be prepared according to the expected traffic loads. Regulations and leaflets regarding construction of paved stone surfaces should be heeded. Future loads must not cause the surface to settle or loosen stones. Ideally "ROMEX®-TRASS-BED – the frost resistant drainage mortar" should be used. See separate product information.

Preparation: Clean out joints to a depth of at least 30mm | 1 3/16" (minimum joint width 5mm | 3/16"). The surface to be jointed should be cleaned of all kinds of dirt. Any adjoining surfaces that are not to be jointed should be taped off.

Pre-wet: Pre-wet surface. Porous surfaces as well as higher surface temperatures require more intense pre-wetting.

Application: Open the lid of the bucket. Pour the paving jointing mortar immediately onto the surface and using a coarse street broom or squeegee spread it evenly so that it goes into the joints deeply, firmly and compactly. Professional tip: In order to compact the joints even better, the freshly applied paving jointing mortar can be elutriated using a water spray jet. Sunken joints are re-filled with more paving jointing mortar. Avoid any standing water in the fresh joints, ensure there is sufficient slope.

Final cleaning: Finally, clean the stone surface carefully with a fine hair broom, so that it is free of all mortar residue. Sweep diagonally to the joint. Do not re-use swept off material. Any residual material on the stone surface can still be swept off after 24 hours with a coarse street broom.

Subsequent treatment: Rain protection during drizzle is not necessary. In case of heavy or permanent rain, the jointed surface should be protected for approx. 24 hours. The rain protection (building sheet/cover sheet) can be laid directly onto the surface. During the initial period, a very fine synthetic resin film remains on the stone surface which intensifies the colour of the stones and protects against dirt. This film disappears over the course of time due to weathering and abrasion.

Important instructions: In case of doubt always lay a sample surface before doing the entire jointing. Do not use in "permanently wet areas" (swimming pools, fountains, drains, drip edges etc.) Remove anything that stores water regularly from the jointed surface such as moss, leaves and weeds. Only use on water permeable substructures. The mortar can slowly disintegrate if exposed to permanent water loads or standing water. Only use outdoors.

Application data:

Application time:	20-30 minutes at +20°C +68°F application temperature
Surface temperature:	> 0°C > 32°F
at lower temperatures:	slow hardening
at high temperatures:	quick hardening
Surface re-opening:	- can be walked on after 24 hours/final re-opening after 6 days - if raining or elutriating is carried out, the hardening time may increase by 24-48 hours depending on temperature.

Technical data:

	Laboratory value*1	Building site value*2
Hard mortar raw density:	1,54 kg/dm ³ 0,89 oz/in ³	1,62 kg/dm ³ 0,94 oz/in ³
Bending tensile strength:	3,4 N/mm ² 493 psi	3,6 N/mm ² 522 psi
Compressive strength:	7,1 N/mm ² 1030 psi	5,9 N/mm ² 856 psi
Static elasticity module:	820 N/mm ² 118.931 psi	690 N/mm ² 100.076 psi
Water permeability value:	-	3,91 x 10 ⁻³ m/s 554,2 iph (for a joint fraction of 10%)*3

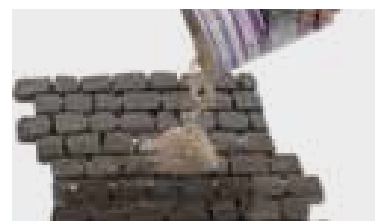
Storage life: 12 months, frostfree, dry
(Protect container against direct sunlight, do not stack pallets)

Consumption table in kg/m² | lb/sq ft - Basis for calculation: Joint depth 30 mm | 1 3/16"

Stone size	40x40 cm 16" x 16"	20x20 cm 8" x 8"	16x24 cm 6 3/16" x 10"	14x16 cm 5 9/16" x 6 3/16"	9x11 cm 3 9/16" x 4 3/8"	4x6 cm 1 5/8" x 2 3/8"
Joint width 5 mm 3/16"	1,1 0,23	2,2 0,45	2,3 0,47	2,8 0,57	4,1 0,84	7,8 1,60
Joint width 8 mm 5/16"	2,1 0,43	4,3 0,88	4,5 0,92	5,5 1,13	8,1 1,66	15,5 3,17
Polygonal slabs	see page 32					



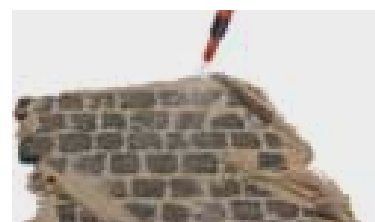
Pre-wet



Pour on



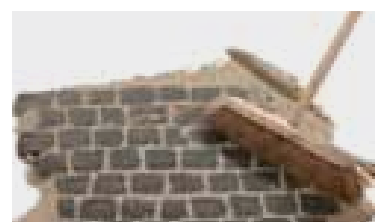
Work in with squeegee



More water



Wash in



Final cleaning

*1 without addition of water

*2 acc. to ROMEX® testing method

*3 water permeable acc. to „Leaflet on water permeable pavements and roads“ by Research institute for road and traffic (Germany); issue 1998